



# Composer™

Part of SpeechGear's *Compadre™* suite of instant language translation solutions found at [www.speechgear.com/store](http://www.speechgear.com/store).

Language is dynamic with new words being continually added to languages. With Composer, you can easily keep your translations up to date by adding your own vocabulary and sharing this with all of your Compadre™ systems.

## Features:

- Form-based editing tools.
- Multiple translations and usage samples per word.
- Acronym expansion.
- Local and remote loading and saving.
- Advanced import options to ensure data integrity.
- Search/Replace tools.
- Dynamic "find" as you type.
- Author filtering.
- Favorites lists support.
- Multiple editing windows.

## A Fully Integrated Translation Suite

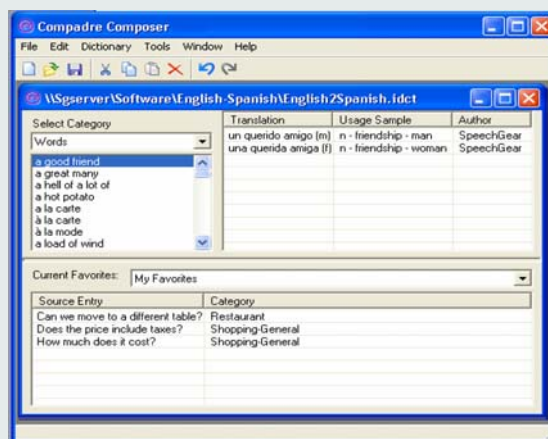
You've heard about the unprecedented features that the *Compadre™* suite offers. No other product line provides real-time translation of text contained in pictures, PowerPoint presentations, Word files, text messages, handwriting and spoken language. At the center of this entire suite is the *Composer* translation engine. *Composer* is a single translation engine that is shared by all of the *Compadre* products. Having this shared translation engine ensures that you have the same reliable performance across all of your *Compadre* modules.

Another key advantage in using *Composer* is that it provides a single location for updating your system's vocabulary. Language is dynamic—in today's world new terms and new meanings are continually being added to each person's vocabulary. *Composer* allows you to keep up with these changes by providing one common tool to update your translation engine as your vocabulary grows. Perhaps you are introducing a new product that your sales force needs to support - or maybe new items to your restaurant menu – or you need to add the name of a new client. With

*Composer* it's not a problem. Included with the translation engine is the *ComposerEditor* interface. This lets you add new vocabulary, including for example acronyms that are used in your business. Simply type the word or phrase, add the appropriate definitions and translations, and you're done. When you add it to *Composer*, all of your *Compadre* modules are automatically updated.

Sometimes you may want to make the changes directly within your *Compadre* module instead of *Composer*. For example, perhaps you are using *Interact* and realize that you want to add a new term. Again, with *Composer*, this is not a problem. You can import entries that are made directly on any of your *Compadre* modules directly into your *Composer* engine where they then will be shared with all your users.

*Composer* gives you the flexibility to tailor your translation vocabulary to fit your needs. One location, easy to use, cost efficient, and accurate results, it's all part of SpeechGear's *Compadre* product line.



## Start Composing Today

*Composer* is included with the purchase of any of SpeechGear's PC-based products. For SpeechGear's non-PC products, such as *Interpreter*, a separate copy of *Composer* can be purchased at minimal cost. To learn more about *Composer* and SpeechGear's entire line of instant translation products, send an email to [info@speechgear.com](mailto:info@speechgear.com), or give us a call at 888-664-9123 and ask for the Sales Department, or visit our website at [www.speechgear.com](http://www.speechgear.com). We are looking forward to working with you to configure an instant translation system specifically for your needs.



SpeechGear

SpeechGear, Inc.  
1310 Bollenbacher Drive  
Northfield, MN 55057  
t: 888.664.9123  
f: 775.703.6730  
e: [info@speechgear.com](mailto:info@speechgear.com)  
w: [www.speechgear.com](http://www.speechgear.com)