



# Compadre®

SpeechGear's Compadre® suite of instant language translation solutions.



Selected as Software Product of the Year by Law Enforcement Magazine.



## Features:

- Bi-directional instant language translation.
- Whatever you say, type or write is instantly translated and spoken in the desired foreign language.
- Affordable software that you own and can use as often as needed, versus an expensive service to which you need to subscribe.
- Use your existing computers – no need to purchase new systems.
- Generates a complete transcript of each and every conversation that you can save for future reference.

## Languages:

- Spanish, German, Italian, Portuguese, Dutch, Mandarin Chinese, Arabic, Russian, and many more...



1310 Bollenbacher Drive  
Northfield, MN 55057  
t: 888-664-9123  
f: 866-356-6644  
[info@speechgear.com](mailto:info@speechgear.com)  
[www.speechgear.com](http://www.speechgear.com)

## Recommended by the NIJ's OLETC Advisory Council

“Council members described this technology as an excellent device that is versatile, well designed and cost effective. There are many applications for this product. Primary ones include front desks at jails, interrogation, communications particularly in INS detention centers, translation between staff and families during visitation, and probation and parole. This product would also be beneficial in translating incoming and outgoing mail in correctional facilities.”

*Evaluation Report of Compadre Suite Conducted by the NIJ's Office of Law Enforcement Technology Commercialization (OLETC)*



# OLETC

## Remove Language Barriers throughout Your Facility

Corrections personnel each day have to deal with an ever increasing problem of overcoming language barriers. Not only is the number of non-English speaking inmates increasing, but so is the number of languages being spoken. The bottom-line is that corrections personnel need to be able to communicate in multiple languages. Subscribing to translation services or hiring full-time interpreters is expensive and beyond the means of many budgets. To meet this challenge with an affordable and effective solution, SpeechGear has worked in partnership with the U.S. Government to develop a complete suite of instant translation products that are now available to corrections facilities.



## Instant Translation. Anytime. Anywhere

- 1 **Instant Translation of Conversations:** With **Compadre:Interact®** anything said is instantly translated and spoken out loud in the desired language. Plus, for interrogations *Interact* automatically generates a transcript of the entire conversation that if desired can be saved for future reference.
- 2 **Instant Translation of Documents:** With **Compadre:Document®** just click a button and your Word document or PowerPoint presentation is instantly translated and automatically formatted.
- 3 **Translation in the Palm of your Hand:** The **Compadre:Communicator®** system gives you a complete turnkey system that combines SpeechGear's *Interpreter®* software with a palm-sized computer, amplified speaker plus an optional bullhorn.
- 4 **Customized Just for You:** With over 800,000 words, **Compadre:Composer®** already translates pretty much anything you say, type or write, plus with the included **ComposerEditor** tool you can easily add your own words and vocabulary to your translation engine and share these with all your users.

## Reduce Operational Costs

SpeechGear's products do not completely replace trained interpreters. With SpeechGear, your interpreters can focus their efforts on situations where they are truly needed, resulting in more effective and efficient use of their valuable time. Instead of using expensive translation services or trying to rely on in-house interpreters for all situations; SpeechGear reduces operational costs by providing you with an affordable instant translation product that you own and can use as the situation dictates. This is not a service or a subscription plan. Use SpeechGear's products as often as needed with no additional usage fees being incurred.

## Configure Your System Today

SpeechGear's products are affordable, effective and immediately available. SpeechGear also has a line of products enabling you to communicate with individuals who are Deaf or Hard-of-Hearing. To configure and order your *Compadre* system, send an email to [info@speechgear.com](mailto:info@speechgear.com) or give us a call at 888-664-9123.



# Compadre™

SpeechGear's Compadre™ suite of instant language translation solutions.



Instant translation of whatever you say, hear, read, write or type.

## Features:

- Bi-directional instant language translation of over 35 languages.
- Translate what you say and hear using *Interact*.
- Translate what you read, write and type using *Document*.
- Translate what you text using *Message*.
- Customize your *Compadre* systems by using *ComposerEditor* to add new vocabulary.

## Languages:

- Spanish
- German
- Italian
- Portuguese
- Dutch
- Chinese
- French
- Arabic
- And many more...



1310 Bollenbacher Drive  
 Northfield, MN 55057  
 t: 888-664-9123  
 f: 866-356-6644  
[info@speechgear.com](mailto:info@speechgear.com)  
[www.speechgear.com](http://www.speechgear.com)

## Instant Translation. Anytime. Anywhere.

SpeechGear's *Compadre* product suite removes the language barrier. With *Compadre* you can instantly communicate with others even when you do not share a common language. Each product within the *Compadre* suite targets a specific mode of communication, letting you instantly translate whatever you say, hear, read, write or type. From enterprise-wide deployments, to personal use, select one or a combination of the products to create your own instant translation solution.

## A Complete Language Translation Solution

The *Compadre* product suite includes five bi-directional modules that can be used independently or merged in any combination to meet your communication needs.



**Compadre:Composer®** is the powerful engine that runs the entire *Compadre* suite. This is the module that generates your translations. With the included *ComposerEditor* feature, you can easily enter new terms and phrases to your translation database, do it once and all your *Compadre* Modules are automatically updated.



**Compadre:Interact®** instantly translates conversations - you speak to the system and while you are speaking it repeats what you are saying in a different language and generates a transcript of your entire conversation. No interpreter, dictionaries, or waiting for your translation. In addition to speech, *Interact* also instantly translates whatever you type and, with a Tablet PC, whatever you write.



**Compadre:Gadget®** runs on your Windows Vista or Windows 7 PC and instantly translates whatever you type. Gadget supports bi-directional translation of 190 language pairs.



**Compadre:Document®** instantly translates and automatically formats PowerPoint presentations and Word documents. If you want a quick overview of the document or if you need a complete and accurate translation ready for distribution and presentation – *Document* is your solution. When it is time to give the presentation, use *DocumentViewer* to simultaneously show the original document along with your translated versions. .



**Compadre: Live Interpreter®** lets you connect to a professional interpreter and do so without advanced scheduling or planning. Now you can hold conversations in over 200 languages anytime and anywhere that you have internet access.



**Compadre:Interpreter®** brings instant translation to your Microsoft Window's Mobile cellular telephone. Download the software, install it on your cellphone, and you're ready to go.

## Plus a Suite of Products for Individuals with Disabilities



**Interact-AS®** removes communication barriers for individuals with disabilities and ensures that your firm is in compliance with the ADA. Examples include supporting the Deaf and Hard-of-Hearing communities by instantly close captioning conversations; for people that have difficulty speaking *Interact-AS* voices aloud whatever they write or type; for those who have difficulty typing or writing they can now use their voice to scribe text. These are a few of the many features included in *Interact-AS* product suite.

## Configure Your System Today

To configure and order your *Compadre* system, send an email to [info@speechgear.com](mailto:info@speechgear.com), or give us a call at 888-664-9123, or visit our website at [www.speechgear.com](http://www.speechgear.com). We are looking forward to working with you to configure an instant translation system specifically for your communication needs.



# Composer<sup>®</sup>

Part of SpeechGear's *Compadre*<sup>™</sup> suite of instant language translation solutions



Language is dynamic with new words being continually added to languages. With Composer, you can easily keep your translations up to date by adding your own vocabulary and sharing this with all of your Compadre<sup>®</sup> systems.

## Features:

- Form-based editing tools
- Multiple translations and usage samples per word
- Acronym and term expansion
- Local and remote loading and saving
- Advanced import options to ensure data integrity
- Search/Replace tools.
- Dynamic "find" as you type
- Author filtering
- Favorites lists support
- Multiple editing windows

## System Requirements:

Composer runs on PCs that meet the following minimum standards:

- Microsoft's Windows XP or newer operating system.
- 1 GB or more of RAM
- 1.8 GHz or faster CPU (an Intel i5 processor is recommended).
- At least 2 GB available disk space



1310 Bollenbacher Drive  
Northfield, MN 55057  
t: 888-664-9123  
f: 866-356-6644  
[info@speechgear.com](mailto:info@speechgear.com)  
[www.speechgear.com](http://www.speechgear.com)

## A Fully Integrated Translation Suite

You've heard about the unprecedented features that the *Compadre*<sup>™</sup> suite offers. No other product line provides real-time translation of text contained in pictures, PowerPoint presentations, Word files, text messages, handwriting and spoken language. At the center of this entire suite is the *Composer* translation engine. *Composer* is a single translation engine that is shared by all of the *Compadre* products. Having this shared translation engine ensures that you have the same reliable performance across all of your *Compadre* modules.

Another key advantage in using *Composer* is that it provides a single location for updating your system's vocabulary. Language is dynamic—in today's world new terms and new meanings are continually being added to each person's vocabulary. *Composer* allows you to keep up with these changes by providing one common tool to update your translation engine as your vocabulary grows. Perhaps you are introducing a new product that your sales force needs to support - or maybe new items to your restaurant menu – or you need to add the name of a new client. With

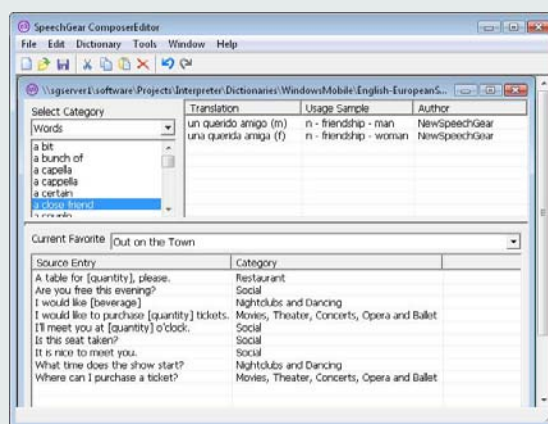
*Composer* it's not a problem. Included with the translation engine is the *ComposerEditor* interface. This lets you add new vocabulary, including for example acronyms that are used in your business. Simply type the word or phrase, add the appropriate definitions and translations, and you're done. When you add it to *Composer*, all of your *Compadre* modules are automatically updated.

Sometimes you may want to make the changes directly within your *Compadre* module instead of *Composer*. For example, perhaps you are using *Interact* and realize that you want to add a new term. Again, with *Composer*, this is not a problem. You can import entries that are made directly on any of your *Compadre* modules directly into your *Composer* engine where they then will be shared with all your users.

*Composer* gives you the flexibility to tailor your translation vocabulary to fit your needs. One location, easy to use, cost efficient, and accurate results, it's all part of SpeechGear's *Compadre* product line.

## Start Composing Today

*Composer* is included with the purchase of any of SpeechGear's PC-based products. For SpeechGear's non-PC products, such as *Interpreter*, a separate copy of *Composer* can be purchased at minimal cost. To learn more about *Composer* and SpeechGear's entire line of instant translation products, send an email to [info@speechgear.com](mailto:info@speechgear.com), or give us a call at 888-664-9123 and ask for the Sales Department, or visit our website at [www.speechgear.com](http://www.speechgear.com). We are looking forward to working with you to configure an instant translation system specifically for your needs.





# Interact™

Part of SpeechGear's *Compadre™* suite of instant language translation solutions



## Reduce

Your translation services budget and

## Improve

Your multi-lingual communications

### Features:

- Instant bi-directional translation of whatever you say, write or type.
- Automatic generation of transcriptions of your conversations.
- Multiple playback capabilities including male and female voice output.
- Headset compatibility enables hands-free and eyes-free operations.
- Continuous repeat mode for use in crowd control situations.
- Visualize feature allows you to display and notate pictures, forms and videos, further improving your ability to Interact.
- Interact voices aloud your translation at the same time it's listening to you speak.

### System Requirements:

Interact runs on PCs that meet the following minimum standards:

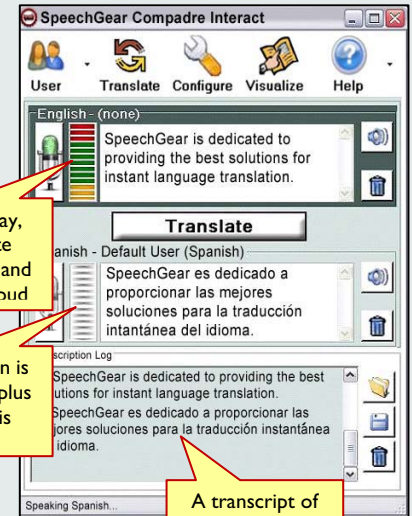
- Microsoft's Windows XP or newer operating system.
- 1 GB or more of RAM (at least 2 GB is preferred)
- 1.8 GHz or faster CPU (an Intel i5 processor is recommended).
- At least 2 GB available disk space.
- An external microphone.



1310 Bollenbacher Drive  
 Northfield, MN 55057  
 t: 888-664-9123  
 f: 866-356-6644  
[info@speechgear.com](mailto:info@speechgear.com)  
[www.speechgear.com](http://www.speechgear.com)

## Instant Translation of Conversations

Speak to the system, and *Compadre:Interact*® repeats what you said in a different language and at the same time generates a complete transcript. There are many translation products, but only one that allows you to truly *Interact*. Say something and it's voiced out loud in another language; hear something in a foreign language and it's translated and spoken to you in English. No human interpreter, no dictionaries, no memorizing of pre-recorded phrases, no constraints, no expensive translation services; just real-time speech-to-speech translation of conversations anytime and anywhere.



## Say What You Want to Say



With *Compadre:Interact*® anything you say is instantly translated. Compare this to other voice-based translators where you can only use a fixed set of phrases and words. With Interact there are no boundaries, no constraints, no limited number of phrases. Interact comes preloaded with over 900,000 words that can be used in whatever you say, plus you can even easily add your own vocabulary such as acronyms or proper nouns. Instant translation of anything you say, hear, type or write with no limits, that's *Compadre:Interact*.

## A Picture is worth a Thousand Words

Often communicating is more than simply speaking. With *Interact's* Visualize feature you can use pictures such as maps and calendars; photographs of people and items of interest; forms for individuals to read or fill out, videos demonstrating a task the individual should perform, or if you're using a tablet PC, simply use *Interact's* sketchpad feature. Go beyond simply speaking to truly *Interacting*.

## Hands and Eyes Free Interface

In many situations as a corrections officer you need to keep your hands free and your eyes focused on the situation instead of looking at a computer screen. Once again, *Interact* is your solution. *Interact*, when combined with a headset, includes a complete hands and eyes free interface where voice-commands and audio cues are all that is needed to instantly translate conversations.



## Start Interacting Today

Interact runs on your own PCs, or you can purchase a complete preconfigured system directly from SpeechGear. To learn more about *Interact* and SpeechGear's entire line of instant translation products as well as our products that enable communications with Hard-of-Hearing or Deaf offenders, send an email to [info@speechgear.com](mailto:info@speechgear.com), or give us a call at 888-664-9123 and ask for the Sales Department, or visit our website at [www.speechgear.com](http://www.speechgear.com). We are looking forward to partnering with you to configure an instant translation system specifically for your needs.



# Gadget

Part of SpeechGear's *Compadre*® suite of instant language translation solutions



Bi-directional  
instant translation  
on your desktop

## Features:

- Instant bi-directional translation in nearly 200 language pairs.
- Type your phrase, select your language pair, and click translate.
- Cut and paste your translation into other documents.
- Your choice of interfaces, large or small.
- The interface is automatically localized to the language you have set for your computer.

## System Requirements:

*Compadre:Gadget* runs on all PCs that meet the following requirements:

- Running Microsoft's Vista or Windows 7 Operating System software
- And that have access to the internet.



1310 Bollenbacher Drive  
Northfield, MN 55057  
t: 888-664-9123  
f: 866-356-6644  
[info@speechgear.com](mailto:info@speechgear.com)  
[www.speechgear.com](http://www.speechgear.com)

## Instant Translation of Nearly 200 Language Pairs

Want to translate a phrase, a short sentence, or just see the translation of a word or two? Then *Compadre:Gadget*® is your answer. With Gadget, you can instantly translate phrases to and from 20 different languages, resulting in nearly 200 language pairs. Choose English to Korean; or Thai to Danish; or Swedish to Arabic – they're all part of your Gadget module. Further, *Compadre:Gadget*® is automatically localized to your language – whatever language you have set for your computer is the language that *Compadre:Gadget*® will use for its interface.

### Your Choice of Languages

Arabic	Chinese Simplified
Chinese Traditional	Czech
Danish	Dutch
English	French
German	Greek
Hebrew	Italian
Japanese	Korean
Polish	Portuguese
Russian	Spanish
Swedish	Thai

## Your Desktop Translator

*Compadre:Gadget*® resides directly on the desktop of computers that are running Microsoft's Windows Vista or Windows 7 operating system software. When you install the module, it becomes part of your gadget toolbar. Just write or type in your phrase, select the language(s) you want, and click on the translate button - that's all it takes and you'll instantly see your translation.



## Your Choice of Display Size

Your module includes two interface options: a small size that leaves your desktop free for other applications; and a larger size that allows you to enter longer sentences and phrases. Take your pick - all it takes is a click to switch between the two sizes.

## Cut and Paste

Unlike other PC gadgets, *Compadre:Gadget*® supports cut and paste operations. That way it's easy to enter phrases to be translated, and to use the translations in your other applications such as Microsoft Office.

## Get Translating Today

*Compadre:Gadget* is part of SpeechGear's *Compadre*™ instant translation suite. With *Compadre* your conversations are instantly translated and spoken aloud while you are speaking – no delays or waiting; your documents are translated in seconds with the formatting automatically preserved – no cutting or pasting; your text messages are instantly translated and voiced aloud – you both see and hear the translation. Plus you can easily add your own terms and vocabulary to your translation system. It's all part of the complete *Compadre* suite.

To learn more about the entire *Compadre*™ suite, as well as our line of products for the Deaf and Hard-of-Hearing communities, give us a call at 888-664-9123 and ask for the Sales Department, or send an email to [info@speechgear.com](mailto:info@speechgear.com), or visit our website at [www.speechgear.com](http://www.speechgear.com). We are looking forward to partnering with you to configure an instant translation system specifically for your needs.



# Document

Part of SpeechGear's *Compadre*® suite of instant language translation solutions



Instantly translate documents while automatically retaining the original formatting

## Features:

- Automatically retains the formatting of the original document including picture placement, font types, and layout.
- Automatically scales font sizes so the translated version fits in the same space as the original.
- No need to cut and paste. *Document's* features are directly included in your Microsoft Word® and PowerPoint® apps.
- Use the included *ComposerEditor* feature to add your own vocabulary to your system.
- Use the included *DocumentViewer* feature to display the original document along with translated versions all on a single projector.
- Plus much more...

## System Requirements:

*Document* runs on PCs that meet the following minimum standards:

- Microsoft's Windows XP or newer operating system.
- 1 GB or more of RAM
- 1.8 GHz or faster CPU (a Dual Core CPU is recommended).
- At least 2 GB available disk space.



1310 Bollenbacher Drive  
 Northfield, MN 55057  
 t: 888-664-9123  
 f: 866-356-6644  
[info@speechgear.com](mailto:info@speechgear.com)  
[www.speechgear.com](http://www.speechgear.com)

## Instantly Translate Documents

From creation through distribution and presentation, *Compadre:Document*® combined with Microsoft Office® is your solution for multilingual documents. It is not an expensive service, but rather an affordable software program that resides on your computer. From quick notes that you have entered in a Word® Document, to fully animated PowerPoint® presentations, *Document* is your answer for instant translation.

## Affordable, Easy-to-Use, and Accurate

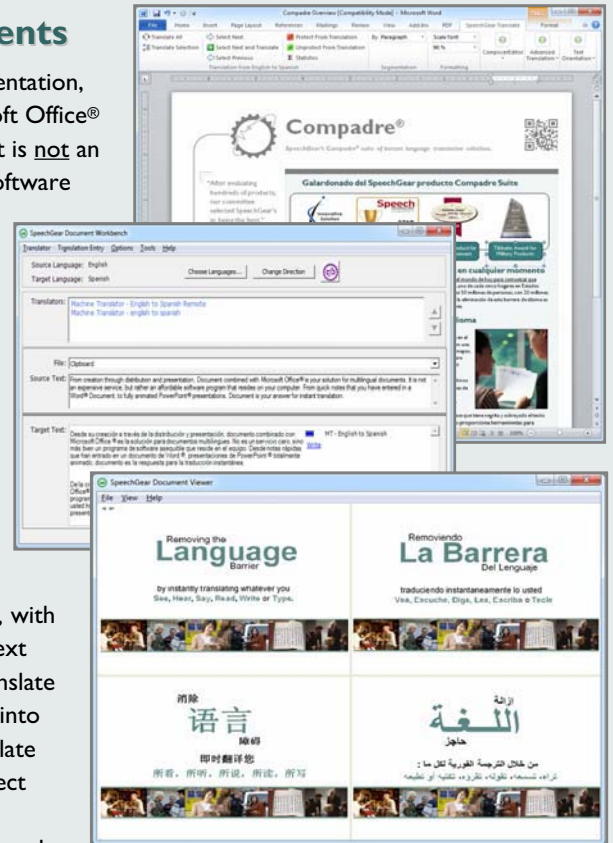
When you purchase *Compadre:Document*®, the translation features are directly included in your existing Microsoft Office programs. Unlike other translation programs, with *Document* there's no need to cut and paste text into a separate translation program, then translate the text, and then paste the translation back into the original document. Need to quickly translate an entire presentation or document? Just select the *Translate All* feature. Perhaps you want to perform a more thorough line-by-line review and at the same time add your own vocabulary and translations to the *Composer* engine? With *Document*, you can easily step through the file by selecting your own pagination preferences, and adding terms is as simple as clicking a button. Further, as one of SpeechGear's many patents, *Document* automatically retains the formatting of your original document. If there's a picture in the original, it will also be there in the translation. If the original document has **bold** and underlined text written in **red**, the translation will have this same formatting. *Document* even provides tools for automatically defining and expanding acronyms that appear within a line of text, and scaling fonts so that a one-page document remains a one-page document when it is translated.

## From Creation through Presentation

*Compadre:Document* does more than just provide you with quick and accurate translations. This is especially true for PowerPoint presentations. Once you're ready to show your presentation, the included DocumentViewer tool allows you to simultaneously display the original file along with your translated versions. With *DocumentViewer* you no longer need multiple LCD projectors or to worry about keeping translated versions synchronized throughout the presentation.

## Configure Your System Today

To learn more about *Document*, give us a call at 888-664-9123 and ask for the Sales Department, or send an email to [info@speechgear.com](mailto:info@speechgear.com), or visit our website at [www.speechgear.com](http://www.speechgear.com). We are looking forward to working with you to configure an instant translation system specifically for your needs.





# Communicator™

Part of SpeechGear's *Compadre™* suite of instant language translation solutions found at [www.speechgear.com/store](http://www.speechgear.com/store).

Instant spoken translation in a pocketable size

## Features:

- Complete ready-to-use system that combines SpeechGear's *Interpreter* software with a ruggedized computer and a built-in loud speaker for a translation, anytime, anywhere.
- Speak, type, write or select a phrase using the touchscreen, and with *Communicator* you will both see and hear the translation spoken in the second language.
- Use *PhraseBuilder™* to say exactly what you want – use it to translate over 100,000 words and phrases.
- Full function Windows Mobile computer supports all your applications including Windows Mobile Office, calendars, calculator, contact manager, media player, games, and internet connectivity.
- Intel PXA processor with Windows Mobile OS and 2 USB ports.
- Wi-Fi and Bluetooth connectivity.
- 4" VGA sunlight readable touchscreen.
- Built-in high quality speaker.
- 11 ounces in weight.
- 5.3" x 3" x 1" in size.



SpeechGear

SpeechGear, Inc.  
1310 Bollenbacher Drive  
Northfield, MN 55057  
t: 888.664.9123  
f: 775.703.6730  
e: [info@speechgear.com](mailto:info@speechgear.com)  
w: [www.speechgear.com](http://www.speechgear.com)

## Instant Spoken Translation of Your Phrases

The *Communicator* system combines SpeechGear's *Interpreter* software with a ruggedized computer to provide instant spoken translation in a pocket-size system. Simply speak, type, write or use *Communicator's* touchscreen to select the words or phrases you want to translate. With *Communicator* you both see and hear the translation. It's that simple, instant spoken translation.



## Easy to Use

Other systems require you to navigate through multiple menus and scroll through long lists to try to find the phrase you want. *Communicator* makes it easy. *Communicator's* dictionary and phrases are all part of the same interface. Plus, you can easily create your own Favorites Lists for quick recall of phrases that you frequently use. Want more? *Communicator* remembers the most recent 20 phrases that you've translated, allowing easy reuse. Even more? Use the powerful *Find* features to locate phrases that you want to translate. It all adds up to a powerful, flexible, yet easy-to-use pocketable system.



## Say What You Want to Say



With *Communicator*, you will no longer be frustrated by being forced to only use a fixed set of phrases that are hard to locate and difficult to remember. Instead, *Communicator's* *PhraseBuilder™* technology lets you say exactly what you want to say. With a single click the phrase, *Are you carrying a \_\_\_\_\_?* becomes *Are you carrying a gun?* or *Are you carrying a knife?* You can also insert words from *Communicator's* dictionary directly into your phrases. For example, you can enter a word such as *food*, *help* or *supplies* into the phrase, *Do you need any \_\_\_\_\_*. Further, with *Communicator* you can choose to use audio recorded by a native speaker or have *Communicator* automatically generate the speech. You can even add your own new words, phrases and categories. The flexibility is designed into *Communicator* so it adapts to how you want to communicate, instead of the other way around.

## Package Options

*Communicator* comes standard with words and phrases for general conversation (49 categories). Additional packages, such as emergency medical situations (24 categories) and military specific applications (17 categories) are available. Combine your system with *Composer*, and you can easily create your own words, categories and phrases and share these with other users. The *Communicator* system includes a speaker loud enough to be heard in most settings. For extremely noisy situations, or where crowd control is an issue, SpeechGear offers an optional bull-horn speaker.



## Try it today !!!

*Communicator* is part of SpeechGear's entire suite of instant translation products. To learn more about these products and configure a system for your communication needs, send an email to [info@speechgear.com](mailto:info@speechgear.com) or give us a call at 888-664-9123. We're looking forward to configuring an instant translation system specifically for your needs.



# Interact-AS™

One of the many products designed by Auditory Sciences for removing communication barriers.

The only product that allows you to truly Interact

## Features:

- Supports written, typed and spoken input.
- Spoken words are instantly transcribed and displayed. Much faster than CART services.
- Written or typed words are instantly spoken aloud.
- Use the "Visualize" feature as a sketch pad or to display and notate pictures and videos.
- Save a transcript of conversations for future reference.
- Optional language modules instantly translate words to and from a foreign language and enable rapid language learning.

## System Requirements:

Purchase a pre-configured system or load Interact-AS onto your own PC that has the following capabilities.

- Microsoft's Windows XP or newer operating system.
- 1 GB or more of RAM (at least 2 GB is preferred)
- 1.8 GHz or faster CPU (a Dual Core CPU is recommended).
- At least 2 GB available disk space.
- An external microphone.



**Auditory Sciences, LLC.**

A Division of SpeechGear, Inc.

1310 Bollenbacher Drive

Northfield, MN 55057

t: 507.645.8924

f: 775.703.6730

[info@auditorysciences.com](mailto:info@auditorysciences.com)

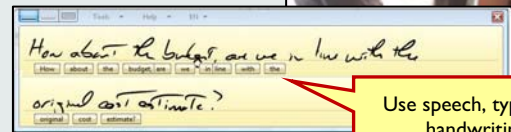
[www.auditorysciences.com](http://www.auditorysciences.com)

## Is Your Firm Compliant with the ADA?

The American's with Disabilities Act prohibits discrimination against employees and customers with disabilities by businesses that serve the general public. Per federal law, firms are required to provide equal access to individuals who are Deaf or Hard-of-Hearing. The following provides examples of how Interact-AS is being used to ensure this compliance.

## Multiple Communication Barriers

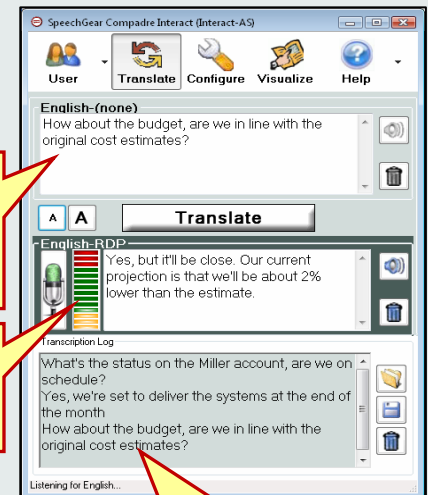
- Individuals who are **Deaf** are directly communicating with people who do not know sign language;
- Employees that are **Hard-of-Hearing** are using Interact-AS's instant closed-captioned transcript feature (less than a 500 msec delay) to improve their cognition rate of what is being said, be it a conversation, a conference room discussion, a radio broadcast, or a video;
- People that have **difficulty writing or typing** are using their voice to type memos and documents and put together presentations;
- Individuals that have **difficulty speaking** are using Interact-AS to voice aloud whatever they write or type using a voice of appropriate gender and cadence;
- People that have **difficulty reading** are using Interact-AS to have documents read aloud to them;
- With the optional Language Modules, *Interact-AS* is **removing language barriers** by instantly translating conversations to and from over 30 foreign languages;
- Plus, with Interact-AS individuals are **rapidly learning and immediately holding conversations** in the desired language.



Use speech, typing or handwriting

The most recent sentence is displayed here, plus words you type or write are spoken aloud

Speech, typing or handwriting from others is formatted and instantly displayed



A transcript of the entire conversation can be saved for future reference

## Simple to Use...

Interact-AS supports **speech, typing and handwriting**, resulting in a portable AND mobile system. Individuals are using *Interact-AS* wherever they go: at work, at parties, in stores, restaurants – instant communication anywhere, anytime with anyone and even in multiple languages.

## ... With Advanced Features

You're perhaps familiar with the saying, "a picture is worth a thousand words." *Interact-AS* puts this into practice. Use the *Visualize* tab to show pictures or video clips that add to your communications – perhaps a presentation, a website, a document, or a product description. Pull up a sketch pad where you can draw and discuss ideas. *Visualize* is just one of Interact's many features. Others include:

- Save a transcript of your conversation for future reference,
- Add a camera to your system to view a live video image of the person who is speaking,
- And many more ...

## Start Interacting Today

*Interact-AS* is affordable, simple to use, with features to ensure all your communication needs are being met. It is 508 compliant plus *Interact-AS* meets the guidelines for Medicare purchases (HCPCS Codes E2510 for a complete pre-configured system, and E2511 when you just purchase the software). To learn more about *Interact-AS* and government programs to help pay for your purchase, visit [www.auditorysciences.com](http://www.auditorysciences.com), or send an email to [info@auditorysciences.com](mailto:info@auditorysciences.com), or give us a call at 507-645-8924.