



# Compadre®

SpeechGear's Compadre® suite of instant language translation solutions.



Increase revenue,  
improve patient care,  
and comply with  
state and federal  
patient access  
regulations, while at  
the same time  
reducing operational  
expenses

## Features:

- Bi-directional instant language translation.
- Whatever you say, type or write is instantly translated and spoken in the desired foreign language.
- Generates a complete transcript of each and every conversation that you can save for future reference.

## Languages:

- Spanish
- German
- Italian
- Portuguese
- Dutch
- Mandarin Chinese
- French
- Russian
- Arabic
- And many more...



1310 Bollenbacher Drive  
Northfield, MN 55057  
t: 888-664-9123  
f: 866-356-6644  
[info@speechgear.com](mailto:info@speechgear.com)  
[www.speechgear.com](http://www.speechgear.com)

## The Best New Product for Enhancing Customer Experience



"The Innovative Solution Awards provide industry recognition for companies who provide the best of the best in leading edge, creative solutions. After evaluating the hundreds of applications, our committee selected SpeechGear's Compadre product suite for the Customer Touch Points category, which is focused on technology that maximizes the customer experience."

*Joe Finizio, President & CEO, Retail Solutions Providers Association*

## Become the Preferred Medical Care Provider

One out of every five households in America speaks a language other than English within their home. This equates to nearly 50 million people, with 20 million having no knowledge of English at all. It's simple, people are willing to drive further to visit a medical provider that speaks their language. With SpeechGear's line of instant translation products, you can become that preferred destination. SpeechGear's Compadre product suite removes the language barrier, letting employees directly communicate with patients, no matter which language they speak. SpeechGear's products are affordable, effective, and immediately available.

## Reduce Operational Costs

SpeechGear's products do not completely replace trained interpreters. With SpeechGear, your interpreters can focus their efforts on situations where they are truly needed, resulting in more effective and efficient use of their valuable time. Instead of using expensive translation services or trying to rely on in-house interpreters for all situations; SpeechGear reduces operational costs by providing you with an affordable instant translation product that you own and can use as the situation dictates. This is not a service or a subscription plan. Use SpeechGear's products as often as needed with no additional usage fees being incurred.



## Five Steps to Remove the Language Barrier

- 1 At the Customer Service and Admission Desks:** Use *Interact* to instantly translate conversations. Simply say a phrase, and it is translated and spoken in the desired foreign language. Use *Document* to provide medical forms written in the patient's language.
- 2 EMTs:** Use *Interpreter* to communicate with patients who have limited English skills.
- 3 Emergency Room:** The first moments may be critical. Use SpeechGear's products to enable immediate multi-lingual communications.
- 4 Patient Examination Offices:** Instant translation of conversations and documents describing medical procedures and outpatient care.
- 5 Pharmacy Windows:** Instant translation of conversations, product labels, usage directions and purchase receipts.

## Configure Your System Today

With SpeechGear, now all of your employees can communicate in multiple languages, adding that differentiating personal touch to your patient's visit. SpeechGear also has a line of products enabling you to communicate with individuals who are deaf or hard of hearing. To configure and order your system send an email to [info@speechgear.com](mailto:info@speechgear.com), or give us a call at 888-664-9123, or visit our website at [www.speechgear.com](http://www.speechgear.com).



# Compadre™

SpeechGear's Compadre™ suite of instant language translation solutions.



Instant translation  
of whatever you  
say, hear, read,  
write or type.

## Features:

- Bi-directional instant language translation of over 35 languages.
- Translate what you say and hear using *Interact*.
- Translate what you read, write and type using *Document*.
- Translate what you text using *Message*.
- Customize your *Compadre* systems by using *ComposerEditor* to add new vocabulary.

## Languages:

- Spanish
- German
- Italian
- Portuguese
- Dutch
- Chinese
- French
- Arabic
- And many more...



1310 Bollenbacher Drive  
Northfield, MN 55057  
t: 888-664-9123  
f: 866-356-6644  
[info@speechgear.com](mailto:info@speechgear.com)  
[www.speechgear.com](http://www.speechgear.com)

## Instant Translation. Anytime. Anywhere.

SpeechGear's *Compadre* product suite removes the language barrier. With *Compadre* you can instantly communicate with others even when you do not share a common language. Each product within the *Compadre* suite targets a specific mode of communication, letting you instantly translate whatever you say, hear, read, write or type. From enterprise-wide deployments, to personal use, select one or a combination of the products to create your own instant translation solution.

## A Complete Language Translation Solution

The *Compadre* product suite includes five bi-directional modules that can be used independently or merged in any combination to meet your communication needs.



**Compadre:Composer®** is the powerful engine that runs the entire *Compadre* suite. This is the module that generates your translations. With the included *ComposerEditor* feature, you can easily enter new terms and phrases to your translation database, do it once and all your *Compadre* Modules are automatically updated.



**Compadre:Interact®** instantly translates conversations - you speak to the system and while you are speaking it repeats what you are saying in a different language and generates a transcript of your entire conversation. No interpreter, dictionaries, or waiting for your translation. In addition to speech, *Interact* also instantly translates whatever you type and, with a Tablet PC, whatever you write.



**Compadre:Gadget®** runs on your Windows Vista or Windows 7 PC and instantly translates whatever you type. Gadget supports bi-directional translation of 190 language pairs.



**Compadre:Document®** instantly translates and automatically formats PowerPoint presentations and Word documents. If you want a quick overview of the document or if you need a complete and accurate translation ready for distribution and presentation – *Document* is your solution. When it is time to give the presentation, use *DocumentViewer* to simultaneously show the original document along with your translated versions. .



**Compadre: Live Interpreter®** lets you connect to a professional interpreter and do so without advanced scheduling or planning. Now you can hold conversations in over 200 languages anytime and anywhere that you have internet access.



**Compadre:Interpreter®** brings instant translation to your Microsoft Window's Mobile cellular telephone. Download the software, install it on your cellphone, and you're ready to go.

## Plus a Suite of Products for Individuals with Disabilities



**Interact-AS®** removes communication barriers for individuals with disabilities and ensures that your firm is in compliance with the ADA. Examples include supporting the Deaf and Hard-of-Hearing communities by instantly close captioning conversations; for people that have difficulty speaking *Interact-AS* voices aloud whatever they write or type; for those who have difficulty typing or writing they can now use their voice to scribe text. These are a few of the many features included in *Interact-AS* product suite.

## Configure Your System Today

To configure and order your *Compadre* system, send an email to [info@speechgear.com](mailto:info@speechgear.com), or give us a call at 888-664-9123, or visit our website at [www.speechgear.com](http://www.speechgear.com). We are looking forward to working with you to configure an instant translation system specifically for your communication needs.



# Composer®

Part of SpeechGear's *Compadre™* suite of instant language translation solutions



Language is dynamic with new words being continually added to languages. With Composer, you can easily keep your translations up to date by adding your own vocabulary and sharing this with all of your Compadre® systems.

## Features:

- Form-based editing tools
- Multiple translations and usage samples per word
- Acronym and term expansion
- Local and remote loading and saving
- Advanced import options to ensure data integrity
- Search/Replace tools.
- Dynamic "find" as you type
- Author filtering
- Favorites lists support
- Multiple editing windows

## System Requirements:

Composer runs on PCs that meet the following minimum standards:

- Microsoft's Windows XP or newer operating system.
- 1 GB or more of RAM
- 1.8 GHz or faster CPU (an Intel i5 processor is recommended).
- At least 2 GB available disk space



1310 Bollenbacher Drive  
Northfield, MN 55057

t: 888-664-9123

f: 866-356-6644

[info@speechgear.com](mailto:info@speechgear.com)

[www.speechgear.com](http://www.speechgear.com)

## A Fully Integrated Translation Suite

You've heard about the unprecedented features that the *Compadre™* suite offers. No other product line provides real-time translation of text contained in pictures, PowerPoint presentations, Word files, text messages, handwriting and spoken language. At the center of this entire suite is the *Composer* translation engine. *Composer* is a single translation engine that is shared by all of the *Compadre* products. Having this shared translation engine ensures that you have the same reliable performance across all of your *Compadre* modules.

Another key advantage in using *Composer* is that it provides a single location for updating your system's vocabulary. Language is dynamic—in today's world new terms and new meanings are continually being added to each person's vocabulary. *Composer* allows you to keep up with these changes by providing one common tool to update your translation engine as your vocabulary grows. Perhaps you are introducing a new product that your sales force needs to support - or maybe new items to your restaurant menu – or you need to add the name of a new client. With

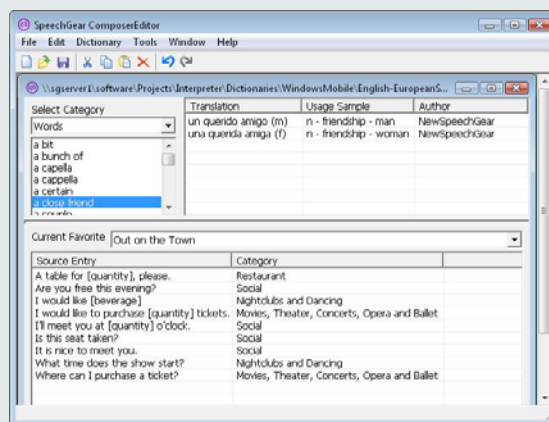
*Composer* it's not a problem. Included with the translation engine is the *ComposerEditor* interface. This lets you add new vocabulary, including for example acronyms that are used in your business. Simply type the word or phrase, add the appropriate definitions and translations, and you're done. When you add it to *Composer*, all of your *Compadre* modules are automatically updated.

Sometimes you may want to make the changes directly within your *Compadre* module instead of *Composer*. For example, perhaps you are using *Interact* and realize that you want to add a new term. Again, with *Composer*, this is not a problem. You can import entries that are made directly on any of your *Compadre* modules directly into your *Composer* engine where they then will be shared with all your users.

*Composer* gives you the flexibility to tailor your translation vocabulary to fit your needs. One location, easy to use, cost efficient, and accurate results, it's all part of SpeechGear's *Compadre* product line.

## Start Composing Today

*Composer* is included with the purchase of any of SpeechGear's PC-based products. For SpeechGear's non-PC products, such as *Interpret*, a separate copy of *Composer* can be purchased at minimal cost. To learn more about *Composer* and SpeechGear's entire line of instant translation products, send an email to [info@speechgear.com](mailto:info@speechgear.com), or give us a call at 888-664-9123 and ask for the Sales Department, or visit our website at [www.speechgear.com](http://www.speechgear.com). We are looking forward to working with you to configure an instant translation system specifically for your needs.





# Interact®

Part of SpeechGear's Compadre® suite of instant language translation solutions



There are many translation products, but only one that allows you to truly *interact*.

## Features:

- Instant bi-directional translation in over 35 languages of whatever you say, write or type.
- Automatically generates a transcript of your conversations.
- Choose to use a male or female voice for your spoken translations.
- Headset compatibility enables hands-free and eyes-free operations.
- Full Duplex Operation: Interact listens to what you say while at the same time voicing translations.
- Continuous repeat mode for use in crowd control situations.
- Visualize feature allows you to display and notate pictures, forms and videos, further improving your ability to Interact.

## System Requirements:

Interact runs on PCs that meet the following minimum standards:

- Microsoft's Windows XP or newer operating system.
- 1 GB or more of RAM (at least 2 GB is preferred)
- 1.8 GHz or faster CPU (an Intel i5 processor is recommended).
- At least 2 GB available disk space.
- An external microphone.



1310 Bollenbacher Drive  
Northfield, MN 55057  
t: 888-664-9123  
f: 866-356-6644  
[info@speechgear.com](mailto:info@speechgear.com)  
[www.speechgear.com](http://www.speechgear.com)

## Instant Translation of Conversations

There are many translation products, but only one that allows you to truly *Interact*. Say something and it's voiced out loud in another language; hear something in a foreign language and it's translated and spoken to you in English. No human interpreter, no dictionaries, no memorizing of pre-recorded phrases, no constraints, no expensive translation services; just real-time speech-to-speech translation of conversations.

## Say What You Want to Say

With *Compadre:Interact*®, anything you say is instantly translated. Compare this to other voice-based translators where you can only use a fixed set of phrases and words. With *Interact* there are no boundaries, no constraints, no limited number of phrases.

*Interact* comes preloaded with over 900,000 words, plus you can even easily add your own vocabulary such as acronyms specific to your place of work, or proper nouns such as the last names of your customers. Instant translation of anything you say, hear, type or write with no limits, that's *Compadre:Interact*.

## Plus Instant Translation of whatever you Type or Write

In addition to speech, *Compadre:Interact* also instantly translates whatever you type, and if you have a tablet PC, whatever you write. From Chinese to Russian to Spanish, with *Interact* you can instantly communicate in multiple languages using speech, typing, and handwriting.

## A Picture is worth a Thousand Words

Often communicating is more than simply speaking. With *Interact*'s Visualize feature you can use pictures such as maps and calendars; photographs of people and items of interest; forms for individuals to read or fill out, videos demonstrating a task the individual should perform, or if you're using a tablet PC, simply use *Interact*'s sketchpad feature. Go beyond simply speaking to truly *Interacting*.

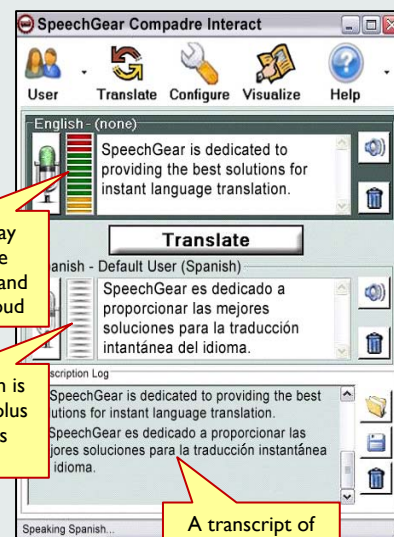


## Hands and Eyes Free Interface

In many situations you need to keep your hands free to perform other tasks – perhaps you are showing a customer how to use a product, a teacher helping a student, a doctor providing medical care to a patient, a police officer responding to an accident, or an employee working on a manufacturing line. Once again, *Interact* is your answer. *Interact* includes a complete hands and eyes free interface where voice-commands and audio cues are all that is needed to instantly translate conversations.

## Start Interacting Today

*Compadre:Interact* runs on your own PCs, or you can purchase a complete preconfigured system directly from SpeechGear. To learn more about *Interact* and SpeechGear's entire line of instant translation products including our products for the Deaf and Hard-of-Hearing communities, give us a call at 888-664-9123 and ask or the Sales Department, or send an email to [info@speechgear.com](mailto:info@speechgear.com), or visit our website at [www.speechgear.com](http://www.speechgear.com). We are looking forward to partnering with you to configure an instant translation system specifically for your needs.





# Gadget

Part of SpeechGear's *Compadre*® suite of instant language translation solutions



Bi-directional  
instant translation  
on your desktop

## Features:

- Instant bi-directional translation in nearly 200 language pairs.
- Type your phrase, select your language pair, and click translate.
- Cut and paste your translation into other documents.
- Your choice of interfaces, large or small.
- The interface is automatically localized to the language you have set for your computer.

## System Requirements:

*Compadre:Gadget* runs on all PCs that meet the following requirements:

- Running Microsoft's Vista or Windows 7 Operating System software
- And that have access to the internet.



1310 Bollenbacher Drive  
Northfield, MN 55057  
t: 888-664-9123  
f: 866-356-6644  
[info@speechgear.com](mailto:info@speechgear.com)  
[www.speechgear.com](http://www.speechgear.com)

## Instant Translation of Nearly 200 Language Pairs

Want to translate a phrase, a short sentence, or just see the translation of a word or two? Then *Compadre:Gadget*® is your answer. With Gadget, you can instantly translate phrases to and from 20 different languages, resulting in nearly 200 language pairs. Choose English to Korean; or Thai to Danish; or Swedish to Arabic – they're all part of your Gadget module. Further, *Compadre:Gadget*® is automatically localized to your language – whatever language you have set for your computer is the language that *Compadre:Gadget*® will use for its interface.

### Your Choice of Languages

Arabic	Chinese Simplified
Chinese Traditional	Czech
Danish	Dutch
English	French
German	Greek
Hebrew	Italian
Japanese	Korean
Polish	Portuguese
Russian	Spanish
Swedish	Thai

## Your Desktop Translator

*Compadre:Gadget*® resides directly on the desktop of computers that are running Microsoft's Windows Vista or Windows 7 operating system software. When you install the module, it becomes part of your gadget toolbar. Just write or type in your phrase, select the language(s) you want, and click on the translate button - that's all it takes and you'll instantly see your translation.



## Your Choice of Display Size

Your module includes two interface options: a small size that leaves your desktop free for other applications; and a larger size that allows you to enter longer sentences and phrases. Take your pick - all it takes is a click to switch between the two sizes.

## Cut and Paste

Unlike other PC gadgets, *Compadre:Gadget*® supports cut and paste operations. That way it's easy to enter phrases to be translated, and to use the translations in your other applications such as Microsoft Office.

## Get Translating Today

*Compadre:Gadget* is part of SpeechGear's *Compadre*™ instant translation suite. With *Compadre* your conversations are instantly translated and spoken aloud while you are speaking – no delays or waiting; your documents are translated in seconds with the formatting automatically preserved – no cutting or pasting; your text messages are instantly translated and voiced aloud – you both see and hear the translation. Plus you can easily add your own terms and vocabulary to your translation system. It's all part of the complete *Compadre* suite.

To learn more about the entire *Compadre*™ suite, as well as our line of products for the Deaf and Hard-of-Hearing communities, give us a call at 888-664-9123 and ask for the Sales Department, or send an email to [info@speechgear.com](mailto:info@speechgear.com), or visit our website at [www.speechgear.com](http://www.speechgear.com). We are looking forward to partnering with you to configure an instant translation system specifically for your needs.



# Document

Part of SpeechGear's *Compadre®* suite of instant language translation solutions



Instantly translate documents while automatically retaining the original formatting

## Features:

- Automatically retains the formatting of the original document including picture placement, font types, and layout.
- Automatically scales font sizes so the translated version fits in the same space as the original.
- No need to cut and paste. *Document's* features are directly included in your Microsoft Word® and PowerPoint® apps.
- Use the included *ComposerEditor* feature to add your own vocabulary to your system.
- Use the included *DocumentViewer* feature to display the original document along with translated versions all on a single projector.
- Plus much more...

## System Requirements:

Document runs on PCs that meet the following minimum standards:

- Microsoft's Windows XP or newer operating system.
- 1 GB or more of RAM
- 1.8 GHz or faster CPU (a Dual Core CPU is recommended).
- At least 2 GB available disk space.



1310 Bollenbacher Drive  
Northfield, MN 55057  
t: 888-664-9123  
f: 866-356-6644  
[info@speechgear.com](mailto:info@speechgear.com)  
[www.speechgear.com](http://www.speechgear.com)

## Instantly Translate Documents

From creation through distribution and presentation, *Compadre:Document®* combined with Microsoft Office® is your solution for multilingual documents. It is not an expensive service, but rather an affordable software program that resides on your computer. From quick notes that you have entered in a Word® Document, to fully animated PowerPoint® presentations, *Document* is your answer for instant translation.

## Affordable, Easy-to-Use, and Accurate

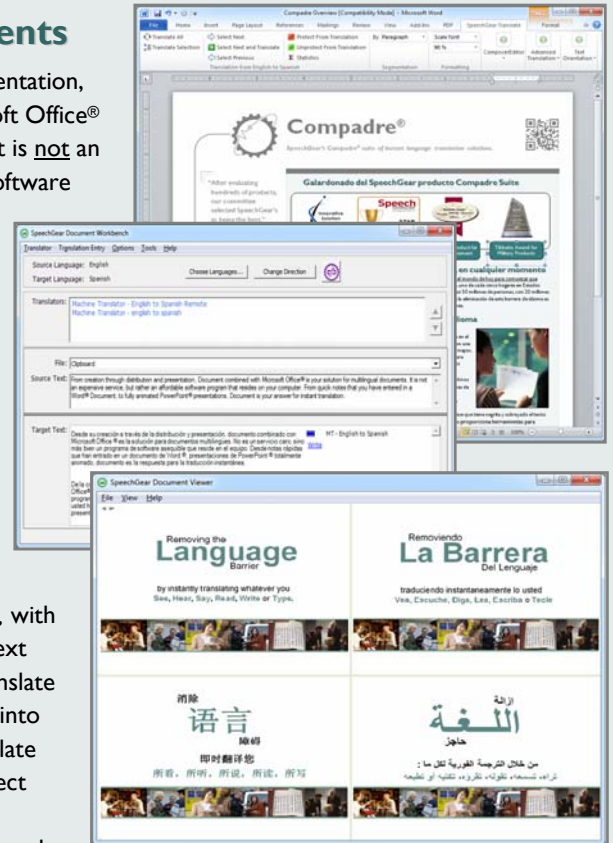
When you purchase *Compadre:Document®*, the translation features are directly included in your existing Microsoft Office programs. Unlike other translation programs, with *Document* there's no need to cut and paste text into a separate translation program, then translate the text, and then paste the translation back into the original document. Need to quickly translate an entire presentation or document? Just select the *Translate All* feature. Perhaps you want to perform a more thorough line-by-line review and at the same time add your own vocabulary and translations to the *Composer* engine? With *Document*, you can easily step through the file by selecting your own pagination preferences, and adding terms is as simple as clicking a button. Further, as one of SpeechGear's many patents, *Document* automatically retains the formatting of your original document. If there's a picture in the original, it will also be there in the translation. If the original document has **bold** and underlined text written in **red**, the translation will have this same formatting. *Document* even provides tools for automatically defining and expanding acronyms that appear within a line of text, and scaling fonts so that a one-page document remains a one-page document when it is translated.

## From Creation through Presentation

*Compadre:Document* does more than just provide you with quick and accurate translations. This is especially true for PowerPoint presentations. Once you're ready to show your presentation, the included *DocumentViewer* tool allows you to simultaneously display the original file along with your translated versions. With *DocumentViewer* you no longer need multiple LCD projectors or to worry about keeping translated versions synchronized throughout the presentation.

## Configure Your System Today

To learn more about *Document*, give us a call at 888-664-9123 and ask for the Sales Department, or send an email to [info@speechgear.com](mailto:info@speechgear.com), or visit our website at [www.speechgear.com](http://www.speechgear.com). We are looking forward to working with you to configure an instant translation system specifically for your needs.





# Communicator™

Part of SpeechGear's Compadre™ suite of instant language translation solutions



Instant spoken  
translation in a  
pocketable size

## Features:

- Complete ready-to-use system that combines SpeechGear's *Interpreter* software with a ruggedized computer and a built-in loud speaker for instant translation, anytime, anywhere.
- Speak, type, write or select a phrase using the touchscreen, and with *Communicator* you will both see and hear the translation spoken in the second language.
- Use *PhraseBuilder™* to say exactly what you want – use it to translate over 100,000 words and phrases.
- Full function Windows Mobile computer supports all your applications including Windows Mobile Office, calendars, calculator, contact manager, media player, games, and internet connectivity.
- Intel PXA processor with Windows Mobile OS and 2 USB ports.
- Wi-Fi and Bluetooth connectivity.
- 4" VGA sunlight readable touchscreen.
- Built-in high quality speaker.
- 11 ounces in weight.
- 5.3" x 3" x 1" in size.



1310 Bollenbacher Drive  
Northfield, MN 55057  
t: 888-664-9123  
f: 866-356-6644  
[info@speechgear.com](mailto:info@speechgear.com)  
[www.speechgear.com](http://www.speechgear.com)

## Instant Spoken Translation of Your Phrases

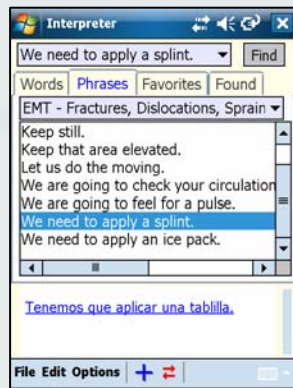
The *Communicator* system combines SpeechGear's *Interpreter* software with a ruggedized computer to provide instant spoken translation in a pocket-size system. Simply speak, type, write or use *Communicator's* touchscreen to select the words or phrases you want to translate. With *Communicator* you both see and hear the translation. It's that simple, instant spoken translation.

## Easy to Use

Other systems require you to navigate through multiple menus and scroll through long lists to try to find the phrase you want. *Communicator* makes it easy. *Communicator's* dictionary and phrases are all part of the same interface. Plus, you can easily create your own Favorites Lists for quick recall of phrases that you frequently use. Want more? *Communicator* remembers the most recent 20 phrases that you've translated, allowing easy reuse. Even more? Use the powerful *Find* features to locate phrases that you want to translate. It all adds up to a powerful, flexible, yet easy-to-use, pocketable system.



## Say What You Want to Say in Any Language



With *Communicator*, you will no longer be frustrated by being forced to only use a fixed set of phrases that are hard to locate and difficult to remember. Instead, *Communicator's* *PhraseBuilder™* technology lets you say exactly what you want to say. With a single click the phrase, *Do you need some \_\_\_?*, becomes *Do you need some food?* or *Do you need some assistance?* You can also insert words from *Communicator's* dictionary directly into your phrases. For example, you can enter a word into the phrase, *Are you allergic to \_\_\_*. Further, with *Communicator* you can choose to use audio recorded by a native speaker or have *Communicator* automatically generate the speech. You can even use *ComposerEditor* to add your own new words, phrases and categories. The flexibility is designed into *Communicator* so it adapts to how you want to communicate, instead of the other way around.

## Package Options

*Communicator* comes standard with words and phrases for general conversation (49 categories). Additional packages, such as emergency medical situations (24 categories) and military specific applications (17 categories) are available. Combine your system with *Composer*, and you can easily create your own words, categories and phrases and share these with other users. The *Communicator* system includes a speaker loud enough to be heard in most settings. For extremely noisy situations, or where crowd control is an issue, SpeechGear offers an optional bull-horn speaker.



## Try it today !!!

*Communicator* is part of SpeechGear's entire suite of instant translation products. To learn more about these products and configure a system for your communication needs, send an email to [info@speechgear.com](mailto:info@speechgear.com) or give us a call at 888-664-9123. We're looking forward to configuring an instant translation system specifically for your needs.



# Interact-AS™

## Professional and Consumer Editions



Two of Auditory Sciences many products for removing communication barriers.

The only product  
that allows you to  
truly Interact

### Features:

- Available in both Professional and Consumer Editions.
- Supports written, typed and spoken input.
- Spoken words are instantly transcribed and displayed. Much faster than CART services.
- The transcript includes an optional synchronized audio recording. Individuals can easily find and replay a recording of what was being said when that portion of the transcript was generated.
- Written or typed words are instantly spoken aloud so a non-verbal person can participate in classroom discussions.
- Use the Visualize feature to sketch ideas or make notations on pictures.

### System Requirements:

Purchase a pre-configured system or load Interact-AS onto your own PC that has the following capabilities.

- Microsoft's Windows Vista or newer operating system (Professional Edition also compatible with Windows XP)
- 1 GB or more of RAM (2 GB is required for Professional Edition)
- 1.8 GHz or faster CPU (an Intel i5 or faster CPU is recommended).
- At least 500K available disk space (3 GB for Professional Edition).



**Auditory Sciences, LLC.**  
A Division of SpeechGear, Inc.

1310 Bollenbacher Drive  
Northfield, MN 55057  
t: 507.645.8924  
f: 866.356.6644

[info@auditorysciences.com](mailto:info@auditorysciences.com)  
[www.auditorysciences.com](http://www.auditorysciences.com)

### At Last, the Wait is Over

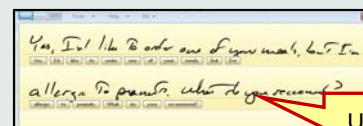
In 1883, the editor of the American Annals of the Deaf wrote, "It is not unreasonable to hope that some instrument will yet be contrived that will transcribe ordinary human utterance." After a wait of over a century, what was once a dream is now available product. Individuals with communication disabilities are using *Interact-AS* wherever they go: at work, at parties, in stores, restaurants – direct communication anywhere, anytime with anyone.



### Multiple Communication Barriers

One product with many uses:

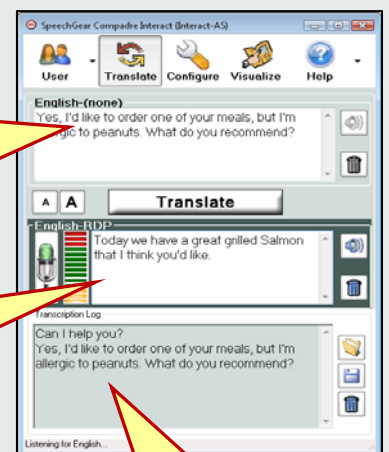
- Individuals who are **Deaf** are directly communicating with people who do not know sign language, no need for a third-party stranger to listen in on your conversations;
- People that are **Hard-of-Hearing** are using Interact-AS's instant closed-captioned transcript feature (less than a one second delay – much faster than CART systems) to improve their cognition rate of what is being said, be it a conversation, a conference room discussion, a radio broadcast, or a video program;
- People that have **difficulty writing or typing** are using their voice to type memos, answer test questions, or generate text for presentations, documents and emails;
- Individuals that have **difficulty speaking** are using Interact-AS to voice aloud whatever they write or type; and
- People that have **difficulty reading** are using Interact-AS to have text read aloud to them.



Use speech, typing or  
handwriting

The most recent  
sentence is displayed  
here, plus words you  
type or write are  
spoken aloud

Speech, typing or  
handwriting from  
others is formatted  
and instantly displayed



A transcript and voice  
recording of the entire  
conversation can be saved  
for future reference

### Choose the Professional Edition ...

If you want to use all of Interact-AS's many feature, then choose the Professional Edition. This version includes Auditory Sciences' high quality speech recognition engine for superior transcription accuracy; an unlimited number of user accounts for customizing your system; voice recordings synchronized with your transcripts; favorites lists for commonly used phrases; sociable audio to enhance conversation participation; automated term expansion; PhraseBuilder™ shortcuts for rapidly constructing sentences, customizable voice synthesis engines; plus the ability to add language modules for multi-lingual conversations – now you can communicate with everyone, anywhere, in dozens of languages.

### ... Or the Consumer Edition

If you are looking for a scaled down version of Interact-AS, then choose the Consumer Edition. This version uses Microsoft's speech recognition and voice synthesis engines. With the Consumer Edition you still have many of the Professional Edition's features including support for speech, typing and handwriting input; instant closed captioning of conversations that can saved for later reference; the complete suite of visualize tools including the built-in sketch pad; and of course Interact-AS's auto translate feature.

### Start Interacting Today

*Interact-AS* is affordable, simple to use, with features to ensure all your communication needs are being met. It is 508 compliant and qualifies for Medicare purchases as a speech generating system. To learn more about *Interact-AS* and government programs to help pay for your purchase, visit [www.auditorysciences.com](http://www.auditorysciences.com), or send an email to [info@auditorysciences.com](mailto:info@auditorysciences.com), or give us a call at 507-645-8924.



# Interact-AS Voice System



One of Auditory Sciences many products for removing communication barriers.

The only speech generating product that allows you to truly *interact*.

## A Complete System:

- Interact-AS Voice Software
- Composer Software including the ability to enter your own keyword shortcuts
- Handwriting and typing input
- Multiple accents and dialects for customized speech generation.
- One- click favorite lists
- Sociable sounds playback
- Term expansion
- PhraseBuilding™ sentences
- HP Slate 500 Tablet PC with Microsoft's Windows 7 Operating System Software
- Digital Pen for handwriting
- Wireless and On-Screen Keyboard for typing
- Docking/Recharging Station
- Wireless Amplified Speaker
- Printed User Manual and Quick Start Guide

## Plus Optional Items:

- Closed Captioning module instantly transcribes whatever people are saying.
- Language Modules provide bi-directional instant spoken translations in your choice of 36 languages.



1310 Bollenbacher Drive  
Northfield, MN 55057

t: 507.645.8924

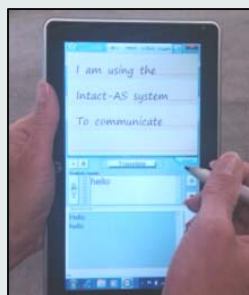
f: 775.703.6730

[info@auditorysciences.com](mailto:info@auditorysciences.com)

[www.auditorysciences.com](http://www.auditorysciences.com)

If you have lost the ability to speak, then the **Interact-AS Voice System™** is your answer. With the Interact-AS Voice System you can once again talk with a grandson, participate in conference room discussions, have a conversation while you are going for a walk with a friend, and even use your cellphone to make phone calls.

## Simple to Use Anytime and Anywhere



Unlike whiteboards or pads of paper where others need to read what you write, Interact-AS voices aloud your phrases. Simply hold the tablet in one hand and write with the other and whatever you write is voiced aloud. That's all it takes. You can even add your own keyword shortcuts, such as having *LOL* be voiced aloud as *Laugh out Loud*. In addition to handwriting, Interact-AS also supports typing, a nice option if you are sitting at a desk or a table.



## A Complete System

The system starts with Auditory Sciences' award winning Interact-AS Voice software. This is preloaded onto a small yet powerful handheld Windows 7 tablet computer that you can use for everything from surfing the internet to running business applications to taking photos and sharing them with your friends. For "on the go" use, a digital pen is included where whatever you write is voiced aloud.



For "at a desk" use, we've included a docking station and a wireless keyboard so whatever you type is voiced aloud. We have also included a small wireless amplified speaker that lets your voice be heard in noisy situations such as in a shopping mall, a crowded restaurant, or an airport.

## Plus Instant Closed Captioning and Translation of Languages

If you have difficulty following conversations, add the optional closed-captioning module that instantly transcribes whatever people are saying. Plus, if you are traveling overseas add the optional bi-directional language modules and now whatever you write or type is instantly translated and voiced aloud in your choice of dozens of languages.

## Start Interacting Today

Affordable, simple to use, with features to ensure all your communication needs are being met, that's what the Interact-AS Voice System is all about. **Interact-AS Voice meets the guidelines for Medicare and Medical Assistance purchases.** To learn more about the Interact-AS Voice System, visit [www.auditorysciences.com](http://www.auditorysciences.com), or send an email to [info@auditorysciences.com](mailto:info@auditorysciences.com), or we can be reached at 507-645-8924.