



Camera

Part of SpeechGear's Compadre™ suite of instant language translation solutions found at www.speechgear.com/store.

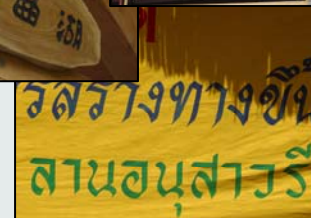


Compadre: Camera works with most digital cameras and cellphones

Point – Click – Translate!

Camera gives you the power to translate text found on documents and signs. Want to translate foreign text found in a Chinese menu, an Arabic road sign, or perhaps a travel document written in Russian? With Camera, you just point, click, and translate—it's that easy.

Translating text using a pocket dictionary is often challenging. Translating text from a language with a non-Roman writing system, such as Arabic or Chinese, is nearly impossible. If you're unfamiliar with the language's alphabet, how can you even look up the words? With Camera, all you do is take a picture and send the captured image to SpeechGear's translation engine. Camera extracts the text, generates a translation, and sends the translated text back to you.



You can literally put Camera in your pocket and take it with you. Because Camera uses server-based software technology, all of the heavy number-crunching takes place on our computers, not yours.

Whether you use a high-end mega pixel digital camera or a camera-equipped cell phone, Camera's advanced image pre-processor makes it easy. Is the picture at the right angle? Is the lighting good? With Camera, it doesn't matter—automatic de-skewing, color-correction, and edge detection technology can find and extract text from almost any image. Camera is able to reliably process images that have skews of up to 45 degrees in all three axes.

World Wide Language Support

Camera supports over 180 different languages, ranging from Afrikaans to Zulu—including most character-based languages such as Japanese, Korean and Chinese, and non-Roman character sets such as those found in Arabic and Russian. With so much flexibility, Camera is the ultimate solution for image-to-text translation.



Package Options

Camera is sold as a standalone system or can be configured in server-client architecture. Visit www.speechgear.com for additional information on Camera and the rest of the SpeechGear's entire line of instant language translation products.

Features:

- Supports over 180 languages.
- Automatic de-skewing up to 45 degrees
- Automatic filters such as edge detection, color correction, and shadow removal.
- Wireless network support



SpeechGear

SpeechGear, Inc.
1310 Bollenbacher Drive
Northfield, MN 55057
t: 888.664.9123
f: 775.703.6730
e: info@speechgear.com
w: www.speechgear.com