

Interpreter Quick Start Guide

Introduction

This Quick Start Guide gives you all the information you need to quickly launch and start using Interpreter. Please refer to the Interpreter User Guide for more detail about every aspect of the application.

Install

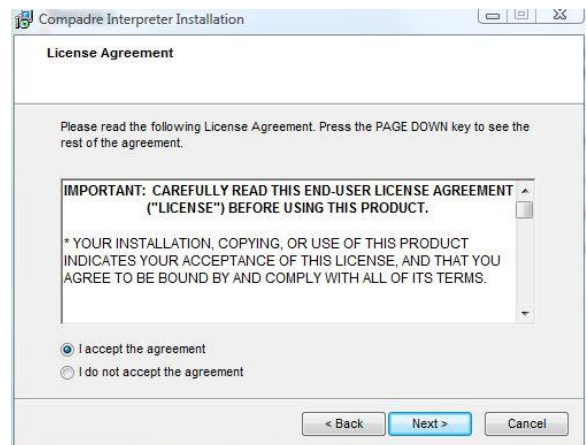
- 1 If you have a previous version of Interpreter installed on your PDA, uninstall it.

On the PDA, go to **Start->Settings->System->Remove Programs** and **Remove** all the programs that begin with SpeechGear.
- 2 Attach the PDA to the PC and make sure they are linked via **ActiveSync** or **Windows Mobile Device Center**.
 - If you are running **Windows XP** on your PC and do not have **ActiveSync** installed, go to **Microsoft ActiveSync** (<http://www.microsoft.com/windowsmobile/activesync/activesync45.mspx>) and download the free installer.
 - If you are running **Windows Vista** then the **Mobile Device Center** is already installed.
- 3 Launch the installer on your PC by double-clicking the **Compadre Interpreter Setup(...).exe** file. The Compadre Interpreter wizard launches:

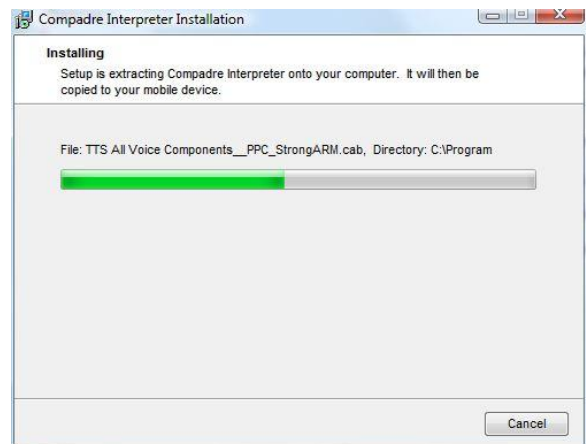
On the Welcome screen click **Next**



- 4 Read and accept the license agreement, and then click **Next**

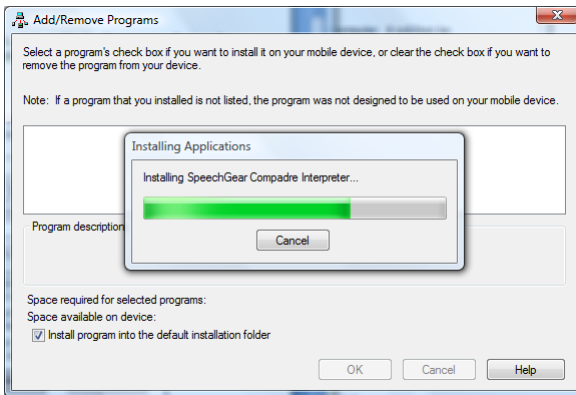


- 5 The install files (CAB) will be extracted to your PC and then copied to your PDA.



- 6 You will be asked where to install the Interpreter components on the PDA.

- 7 Then you will see the Add/Remove Programs screen and on top of that, install status screens.



- 8 Finish



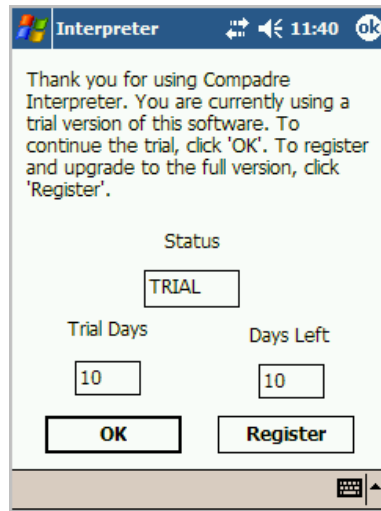
If you need help, see *Installing Interpreter* in the *Getting Started* chapter of the **User Guide**.

Launch

On the PDA, click on **Start->Programs->Compadre Interpreter**.

License

- 1 The product registration screen opens.

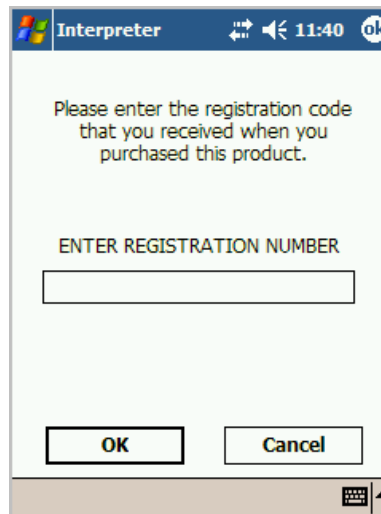


Tap **Register**.

- 2 If you have not entered owner information into your PDA, you will be asked to enter it here.

Enter the owner name in the box and tap **OK**.

- 3 The instructions for entering a registration number appear.



- 4 Enter all five digits of the registration number in the box.

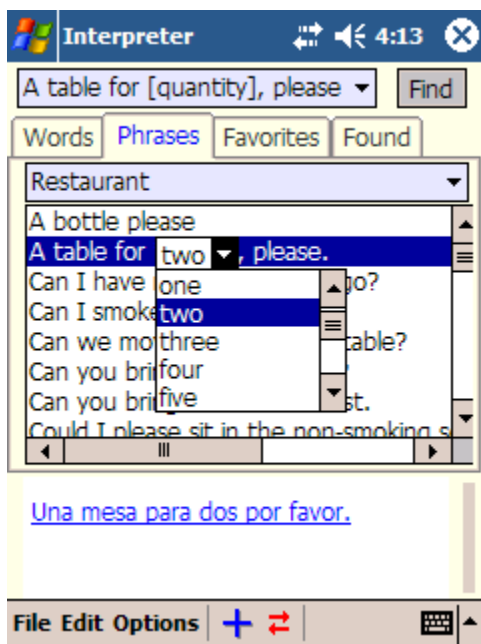
- 5 When finished, tap **OK**. The product is now registered.

Translate

You will be asked to choose a dictionary and the Text-To-Speech (TTS) voices with which to start translating.

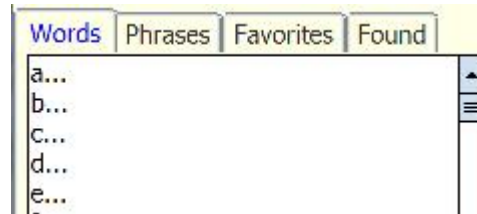


After you select a dictionary, you will see the **Interpreter** interface which contains lists of Phrases which, when selected, show the translation.

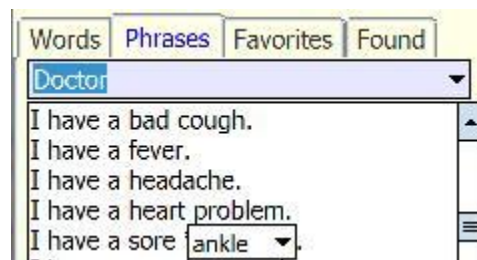


The **Interpreter** interface includes the following features:

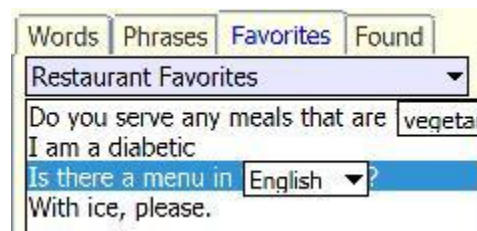
Words tab: Displays the alphabetical listing of all words within the selected dictionary. Click a letter to expand the list of words. Tap and hold on an expanded list to collapse the list again.



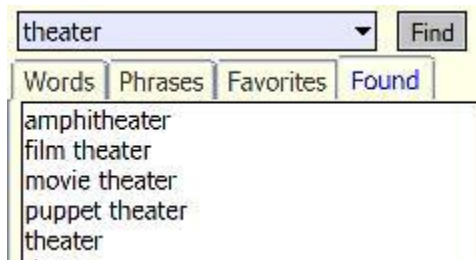
Phrases tab: Displays the alphabetical listing of all phrases within the selected dictionary. Phrases are organized by category, which are listed alphabetically in the drop-down list.



Favorites tab: Displays the alphabetical listing of select terms and phrases that are added to a Favorites list. Each favorites list is organized alphabetically in the drop-down list.



Found tab: Select an entry from the Words list or type an entry into the Find textbox. Then click Find and the matching results are displayed on the Found tab.



File menu: Allows you to change dictionaries and safely exit the program.

Edit menu: Allows you to cut, copy, or paste selected text into the Find textbox.

Options menu: Allows you to manage words, phrases and categories, and favorites lists. You can also manage languages and customize the interface.

Add (blue plus): Allows you to add a term or phrase to a selected favorites list. (You must first select a term.)

Input method (keyboard): Contains the various text-input methods used to enter search terms, name favorites lists, and add new words and phrases.

Read the User Guide

There is a lot of information as well as a few short cuts in the User Guide that could save you time and energy in learning how to use **Interpreter**. A copy of the User Guide is installed onto your Desktop PC along with the Interpreter install files.

Technical Support

Contact Customer Support if you have questions about how to use this application or if you are experiencing technical difficulties.

support@speechgear.com (<mailto:support@speechgear.com>)