

Compadre™:Interpreter Quick Start Guide

Introduction

This Quick Start Guide gives you all the information you need to quickly launch and start using Interpreter. Please refer to the Interpreter User Guide for more detail about every aspect of the application.

Glossary

ASR - Automatic Speech Recognition - the computer program that allows you to search the Phrases with your voice
TTS - Text-To-Speech - the computer program that speaks the translated text

Install

1. If you have a previous version of Interpreter installed on your PDA, uninstall it.

On the PDA, go to **Start->Settings->System->Remove Programs** and **Remove** all the programs that begin with SpeechGear.

2. Attach the PDA to the PC and make sure they are linked via **ActiveSync** or **Windows Mobile Device Center**.

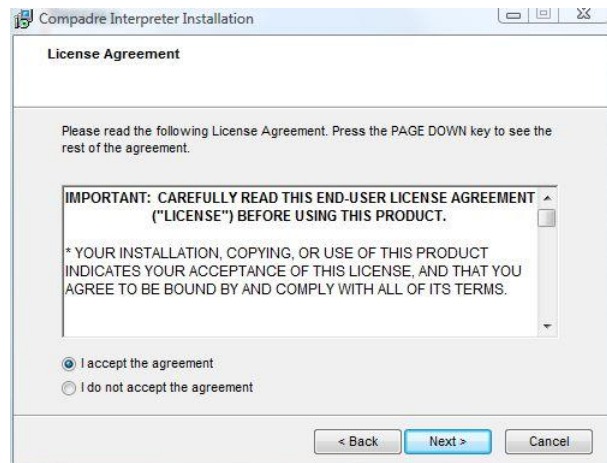
- a. If you are running **Windows XP** on your PC and do not have **ActiveSync** installed, go to [Microsoft ActiveSync](#) and download the free installer.
- b. If you are running **Windows Vista** then the **Mobile Device Center** is already installed.

3. Launch the installer on your PC by double-clicking the **Compadre Interpreter Setup(...).exe** file. The Compadre Interpreter wizard launches:

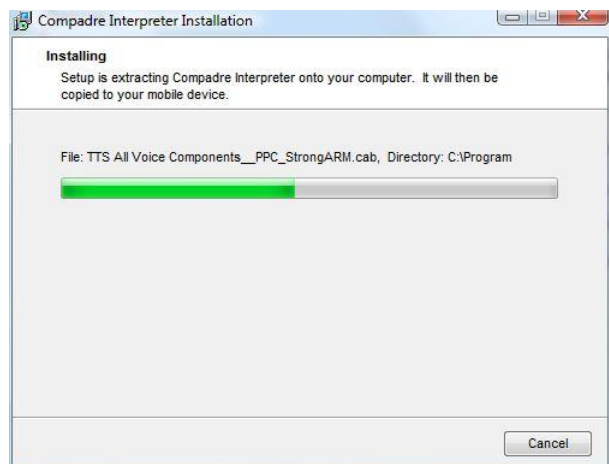
On the Welcome screen click Next



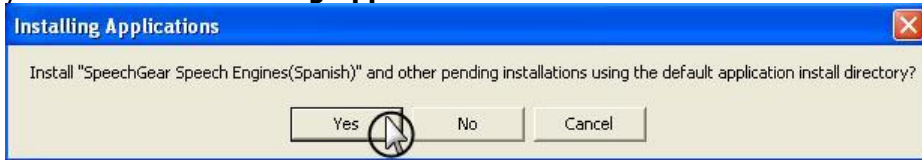
Read and accept the license agreement, and then click Next



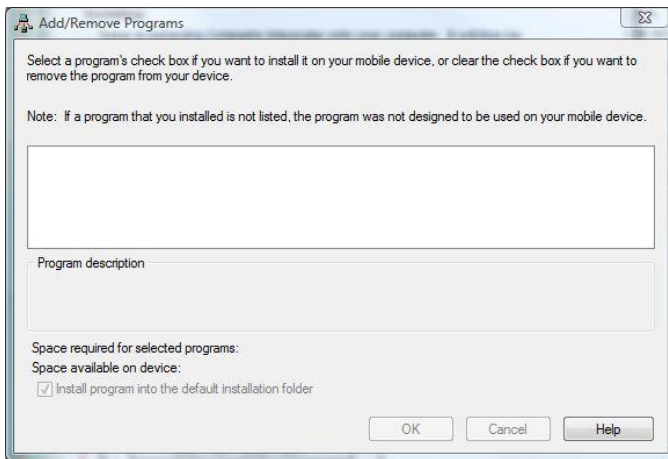
The install files (CAB) will be extracted to your PC and then copied to your PDA.



- If your PDA is running Windows Mobile 2003 then you will see the **Installing Applications** screen.



- If you choose "**Yes**", you must have enough memory to install all components on Main memory.
 - If you click "**No**", you will be given a choice of where else to install.
- If you are installing to a PDA running Windows Mobile 5.0 or 6.0 you will be asked where to install the Interpreter components on the PDA.
 - Then you will see the Add/Remove Programs screen and on top of that, install status screens.



- Finish



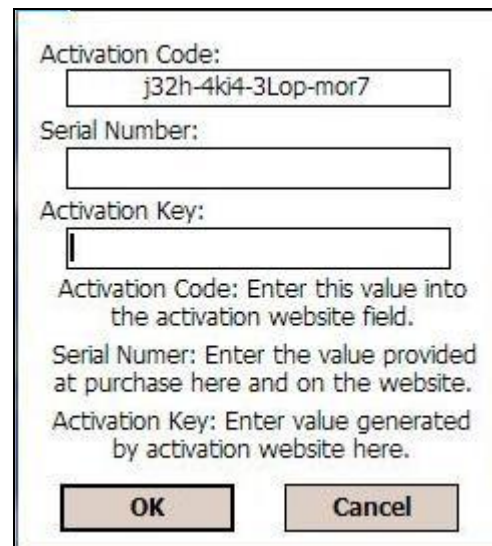
If you need help, see *Installing Interpreter* in the *Getting Started* chapter of the **User Guide**.

Launch

On the PDA, click on **Start->Programs->Compadre Interpreter**.

License

When you first launch Interpreter on your PDA you will see this screen:



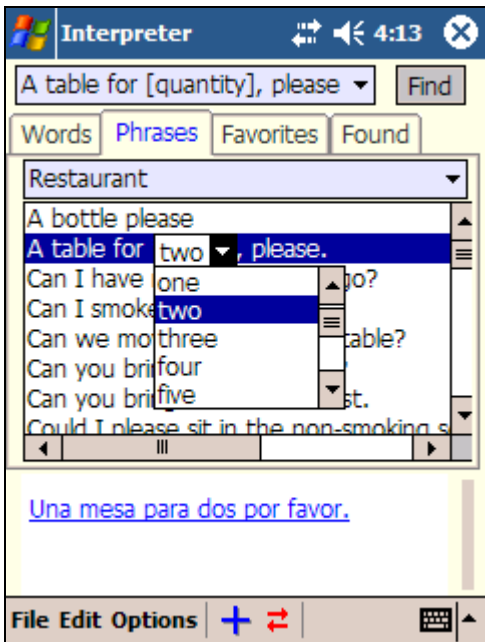
1. The **Activation Code** will already be filled in.
2. You were given a **Serial Number** when you purchased Interpreter. Type this into the middle field.
3. To get your **Activation Key**, open a web browser and go to the activation website,
 - a. Type in your **Activation Code**.
 - b. Type in your **Serial Number**.
 - c. Enter a valid **email address**.
 - d. Your **Activation Key** will be sent to the email address that you provide.
4. Type your **Activation Key** into the bottom field on this Activation screen (shown) on your PDA.
5. Your copy of **Interpreter** is registered to your PDA. You only need to do this once.

Translate

You will be asked to choose a dictionary and the Text-To-Speech voices with which to start translating.

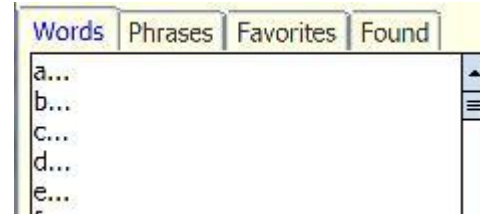


After you select a dictionary, you will see the **Interpreter Interface** which contains lists of Phrases which, when selected, show and speak the translation.

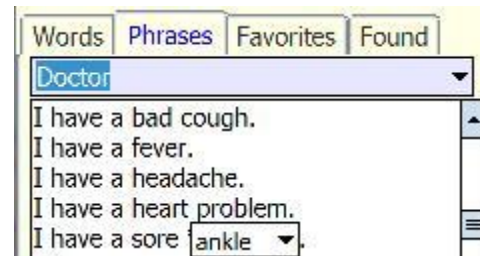


The **Interpreter Interface** includes the following features:

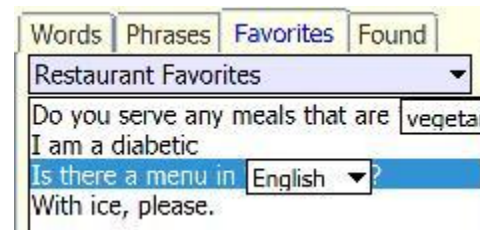
Words tab: Displays the alphabetical listing of all words within the selected dictionary. Click a letter to expand the list of words. Tap and hold on an expanded list to collapse the list again.



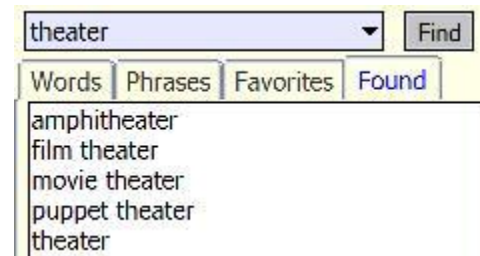
Phrases tab: Displays the alphabetical listing of all phrases within the selected dictionary. Phrases are organized by category, which are listed alphabetically in the drop-down list.



Favorites tab: Displays the alphabetical listing of select terms and phrases that are added to a Favorites list. Each favorites list is organized alphabetically in the drop-down list.



Found tab: Select an entry from the Words list or type an entry into the Find textbox. Then click Find and the matching results are displayed on the Found tab.



File menu: Allows you to change dictionaries, switch directions, and safely exit the program.

Edit menu: Allows you to cut, copy, or paste selected text into the Find textbox.

Options menu: Allows you to manage words, phrases and categories, and favorites lists. You can also manage languages, text-to-speech voices, and customize the interface.

Add (blue plus): Allows you to add a term or phrase to a selected favorites list. (You must first select a term.)

Switch Directions (chasing arrows): Changes the current language direction. For example, if you were translating from English to Spanish, the switch directions button would now allow you to translate from Spanish to English.

Input method (keyboard): Contains the various text-input methods used to enter search terms, name favorites lists, and add new words and phrases.

Read the User Guide

There is a lot of information as well as a few short cuts in this document that could save you time and energy in learning how to use **Interpreter**.

Support

Please look at the website <http://www.speechgear.com/support.aspx>. There are FAQ and Release Notes that might have your problem solved.

Composer

- **Composer** is an application that allows you to edit your interpreter dictionary. This is a feature of **Interpreter** for the advanced user.
- Read *Interpreter* section of the *Composer User Guide*.